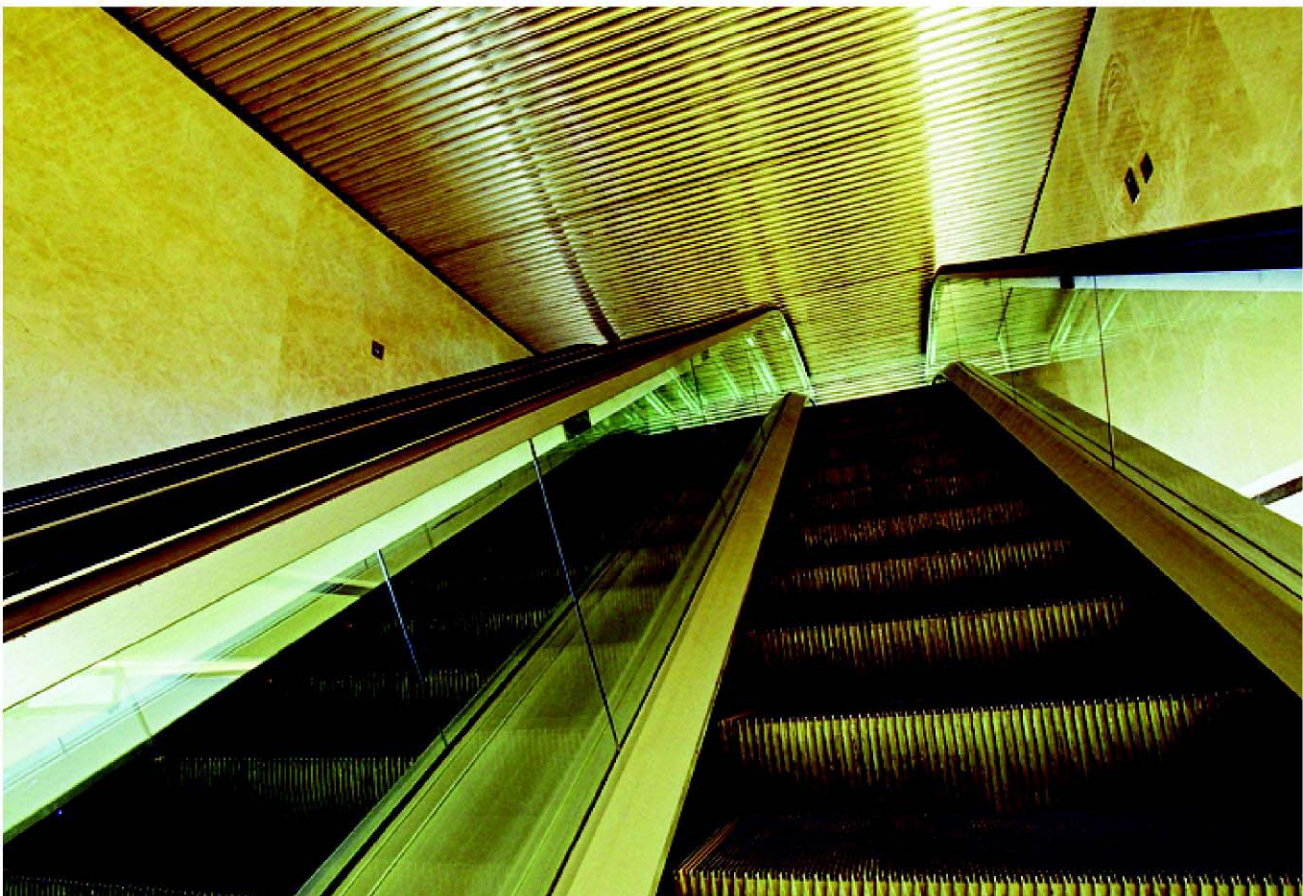
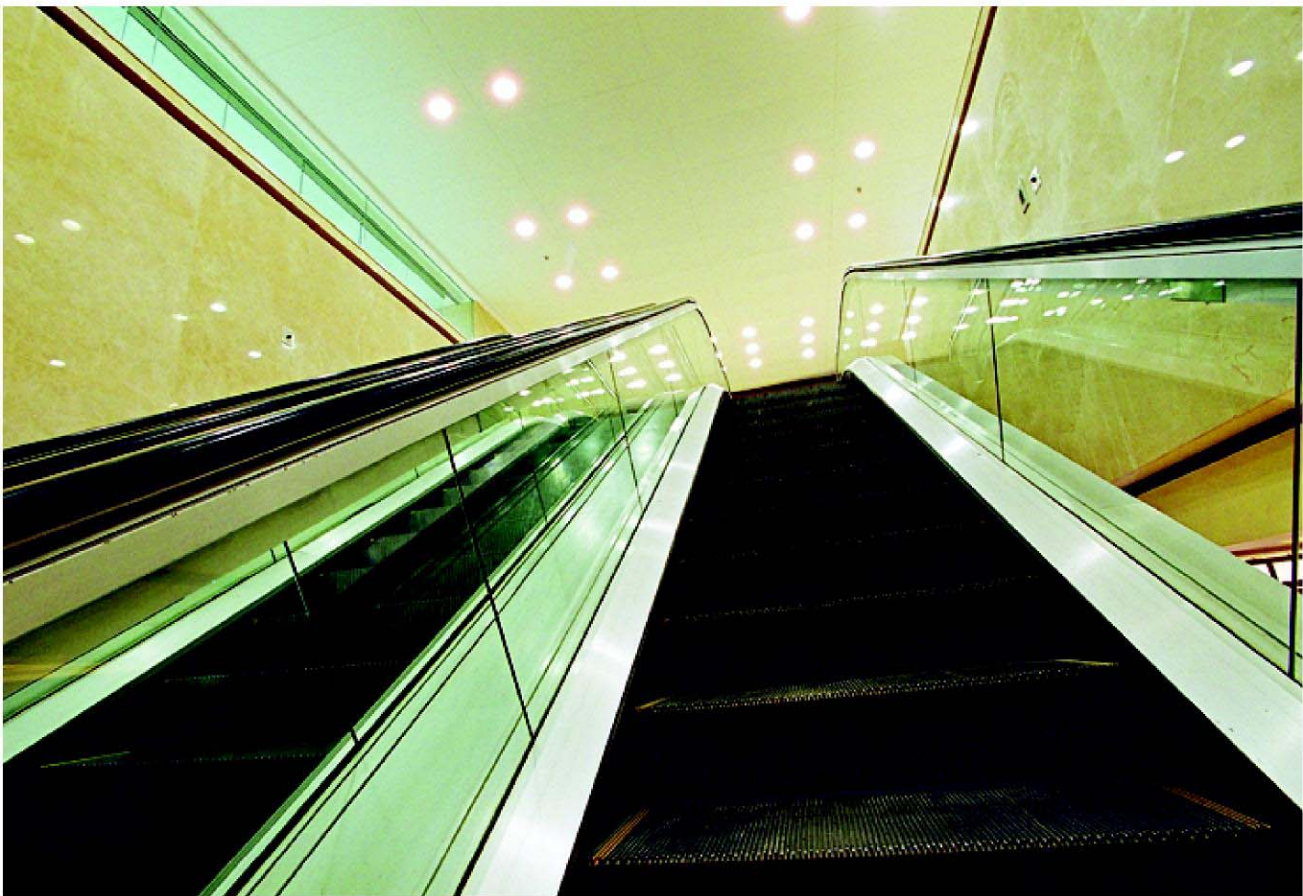
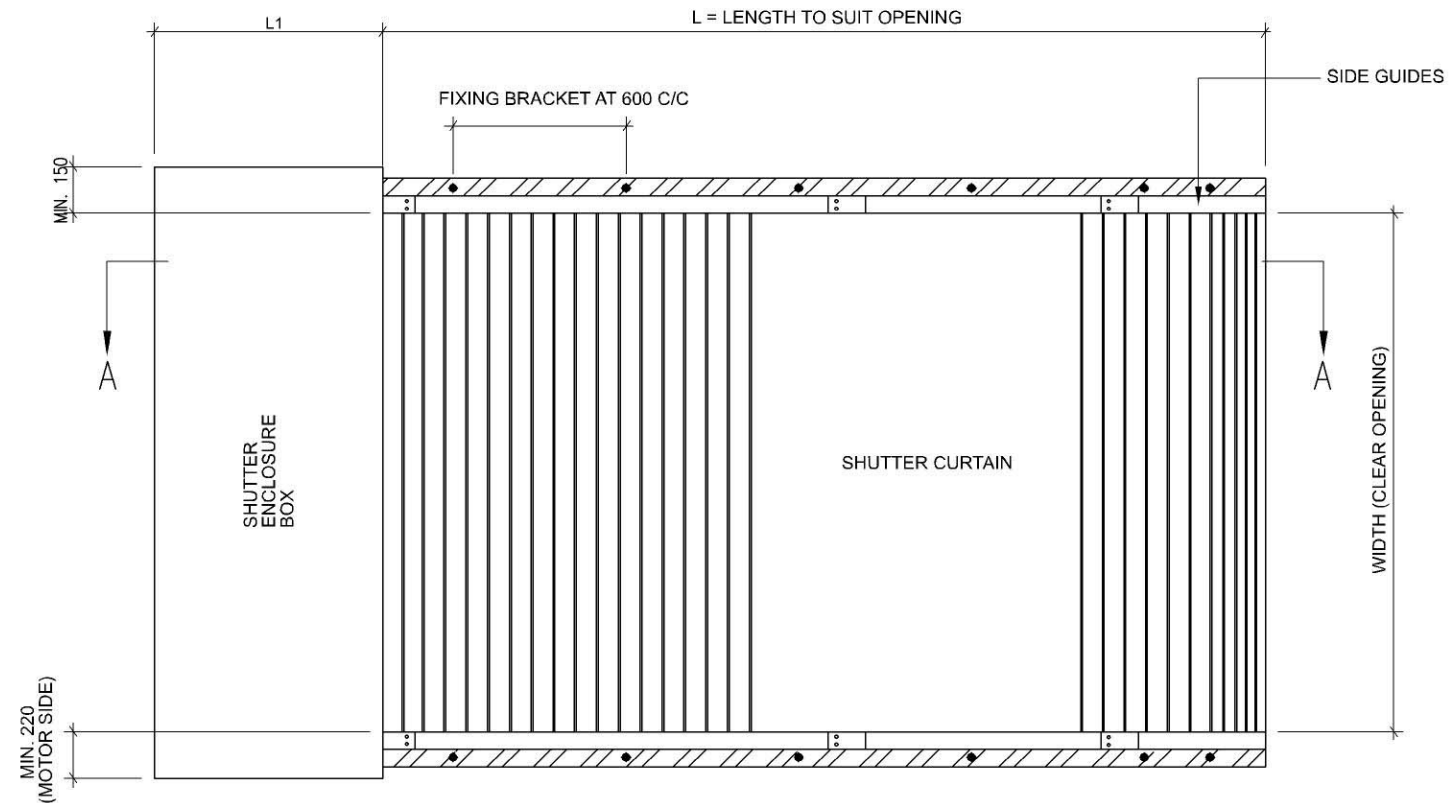


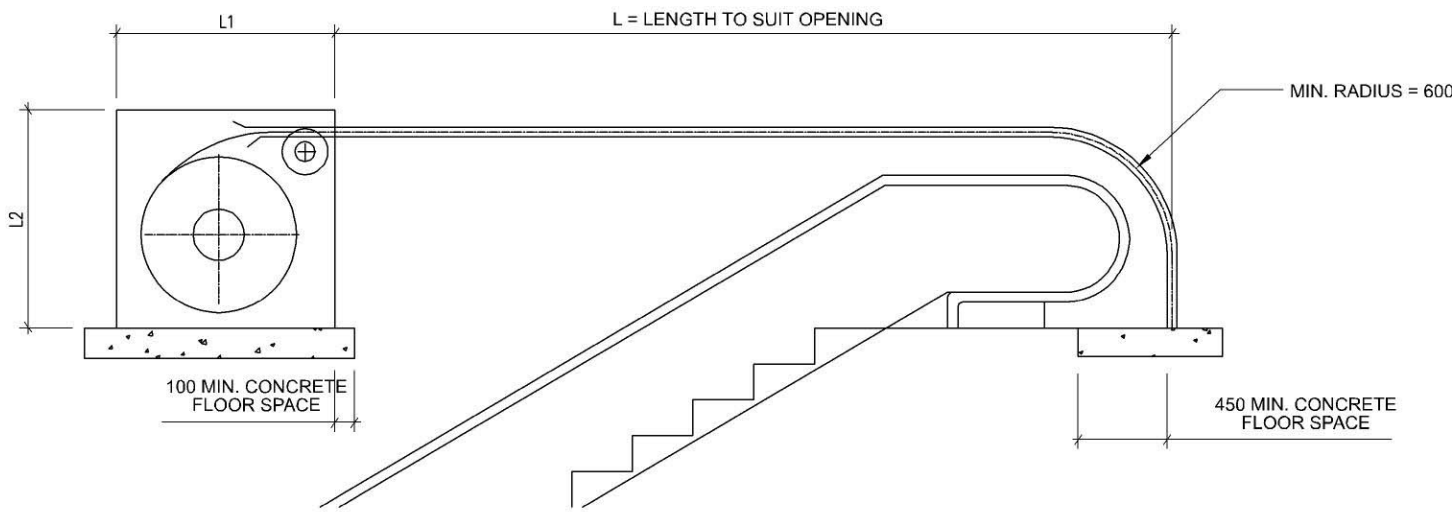
Operation: Horizontally sliding roller shutter



Operation: Horizontally sliding roller shutter



PLAN



SECTION A-A

DIMENSIONS OF ENCLOSURE BOX (L1 AND L2)

SHUTTER WIDTH (m)	L1 (mm)	L2 (mm)
10	800	1100
20	1200	1450
30	1300	1550
40	1400	1750